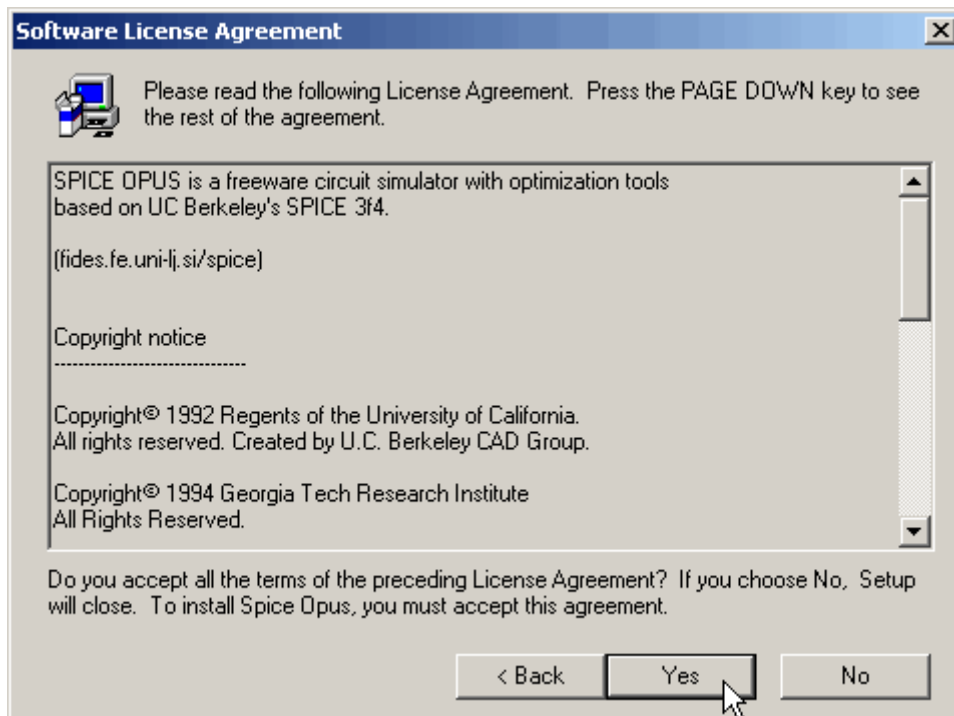


SpiceOpus Installation

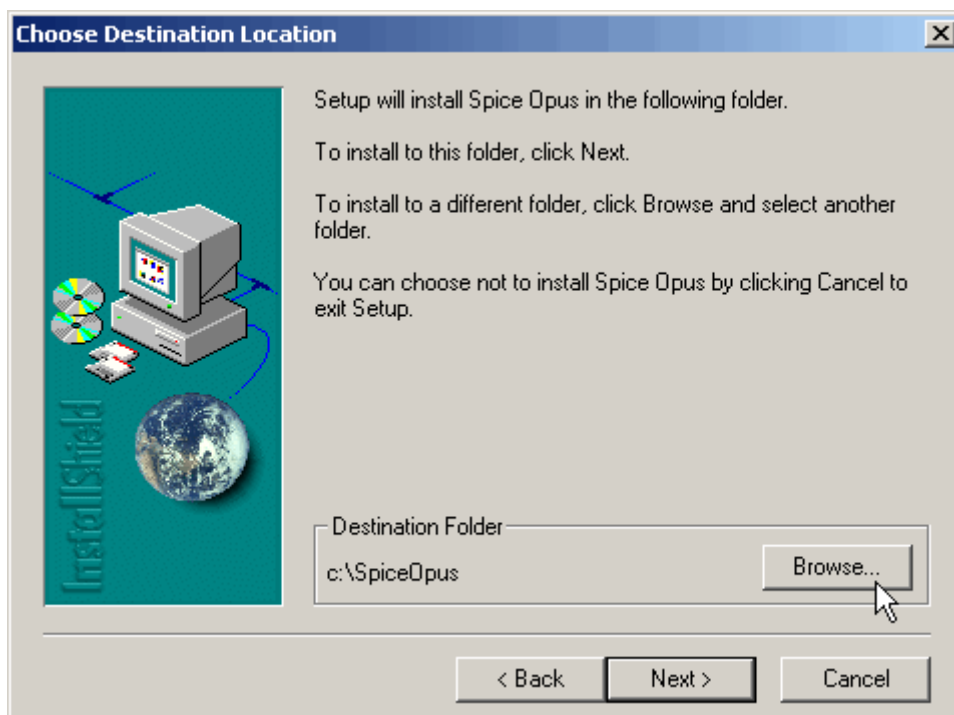
Windows

Installing the software

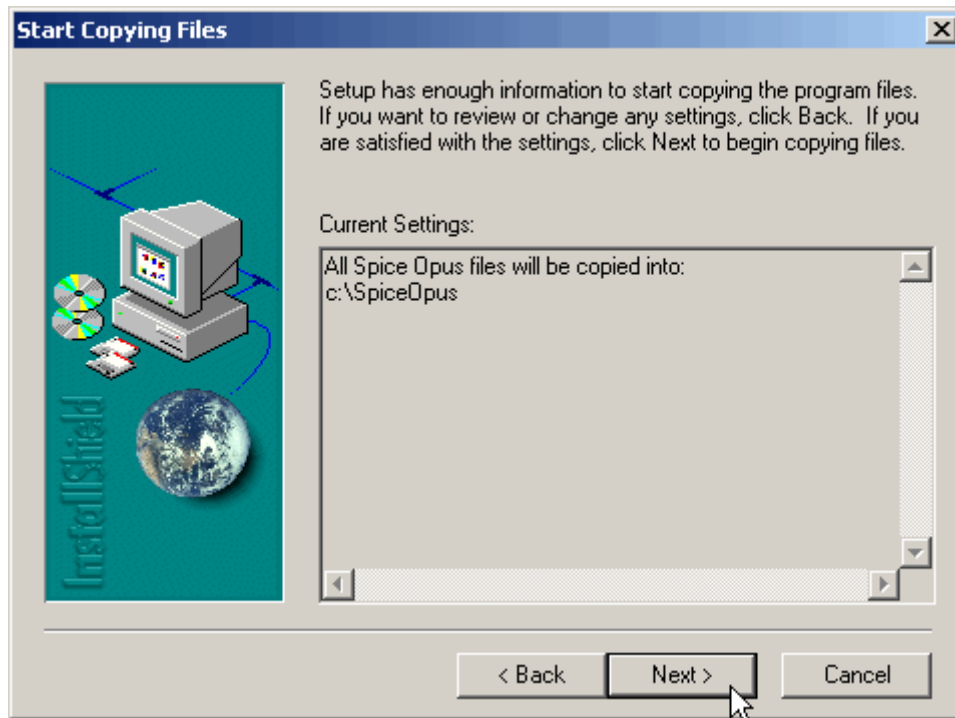
Unpack the zipped archive. Start the installation by double-clicking on the installation executable (Setup.exe) in Windows Explorer.



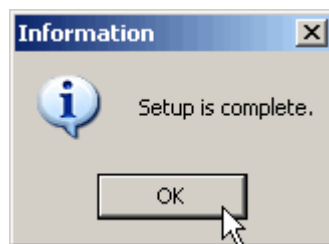
Accept the license agreement.



Change the installation directory by clicking on Browse if you want SpiceOpus to be installed in some different place (by default it is installed in c:\SpiceOpus). Click on Next.



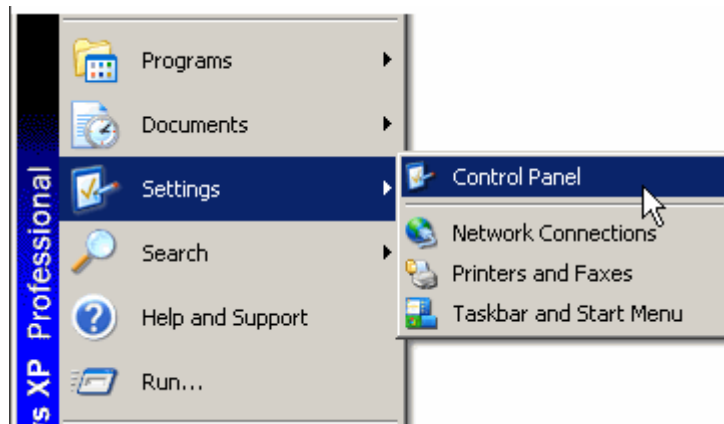
Confirm your choice by clicking on Next.



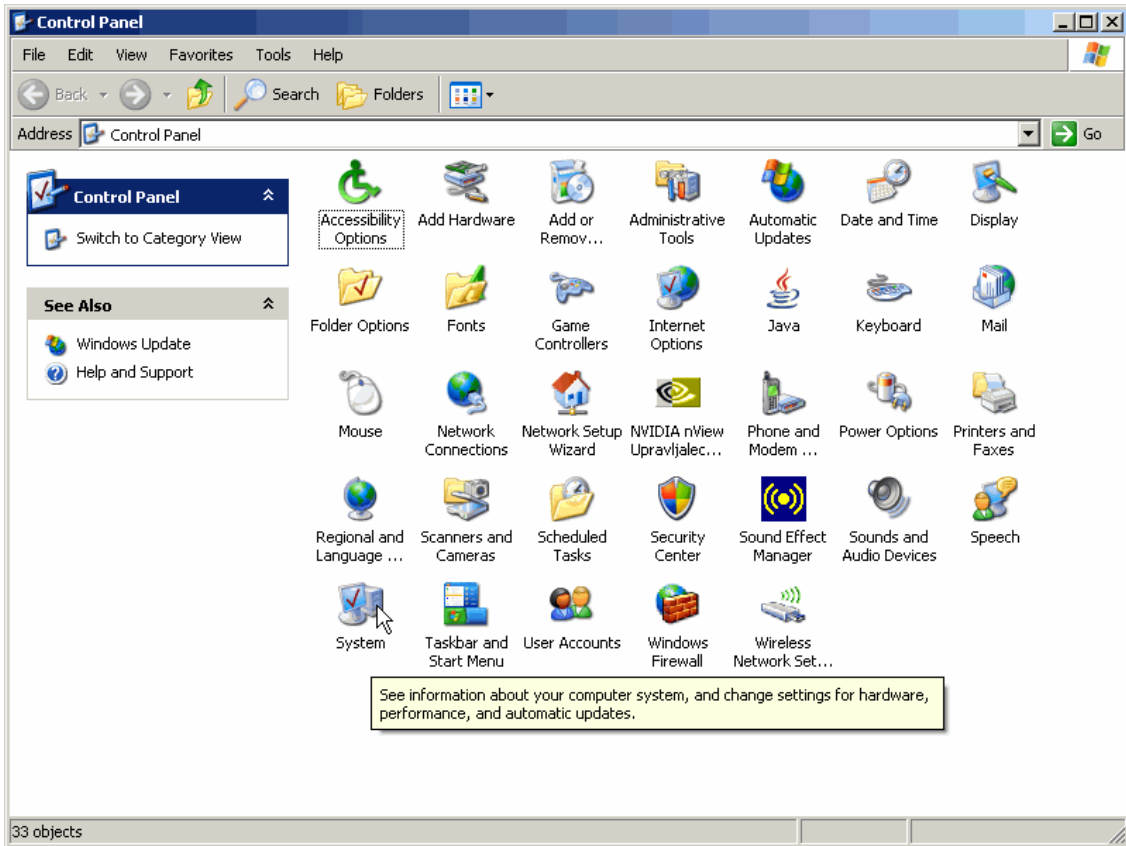
After the installation is finished, click on OK.

Setting up the environment

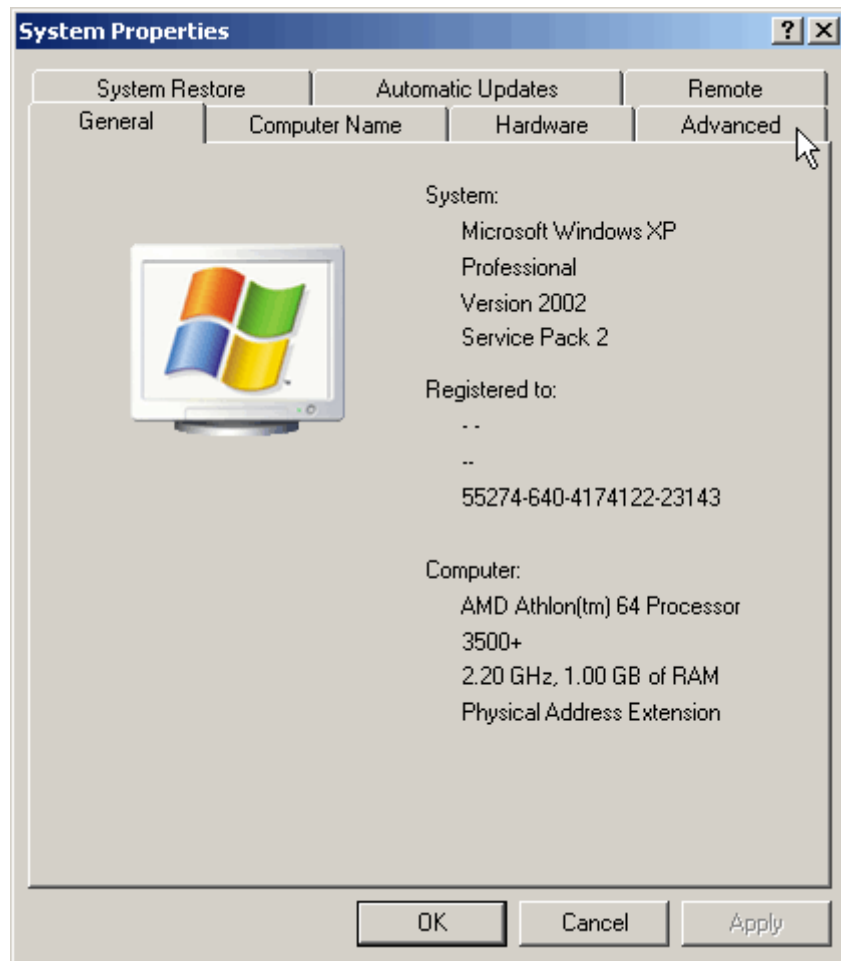
Open the Start menu.



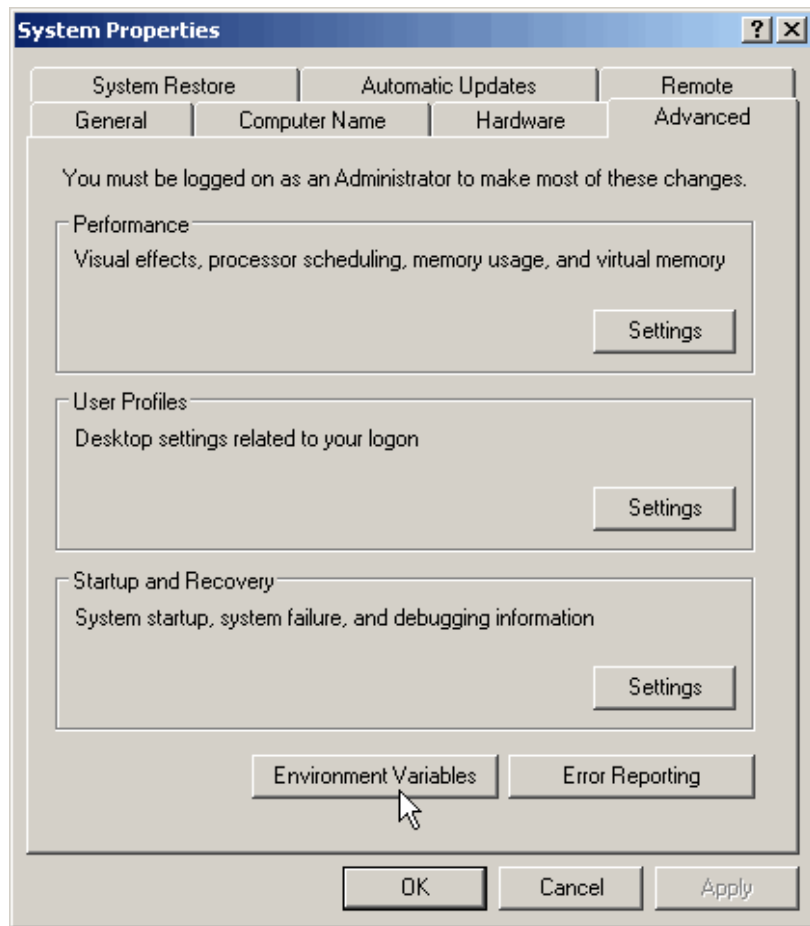
Open the Control Panel.



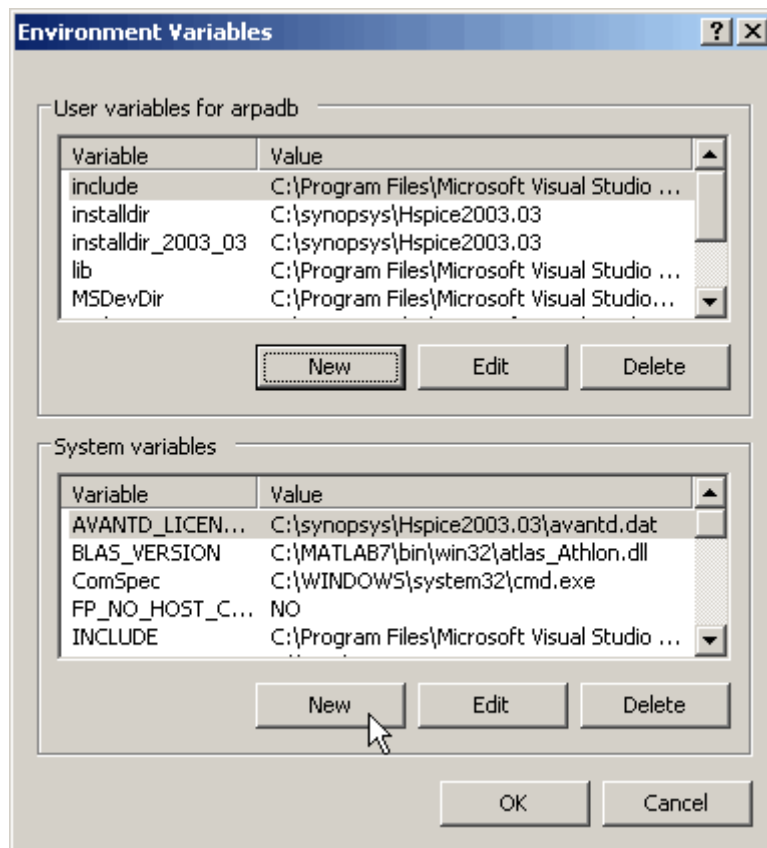
Double-click the System icon on the Control Panel.



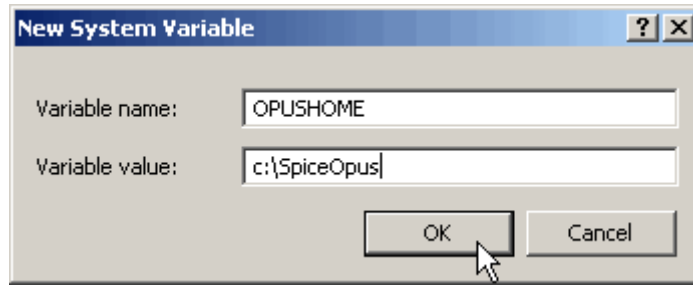
In system properties select the Advanced tab.



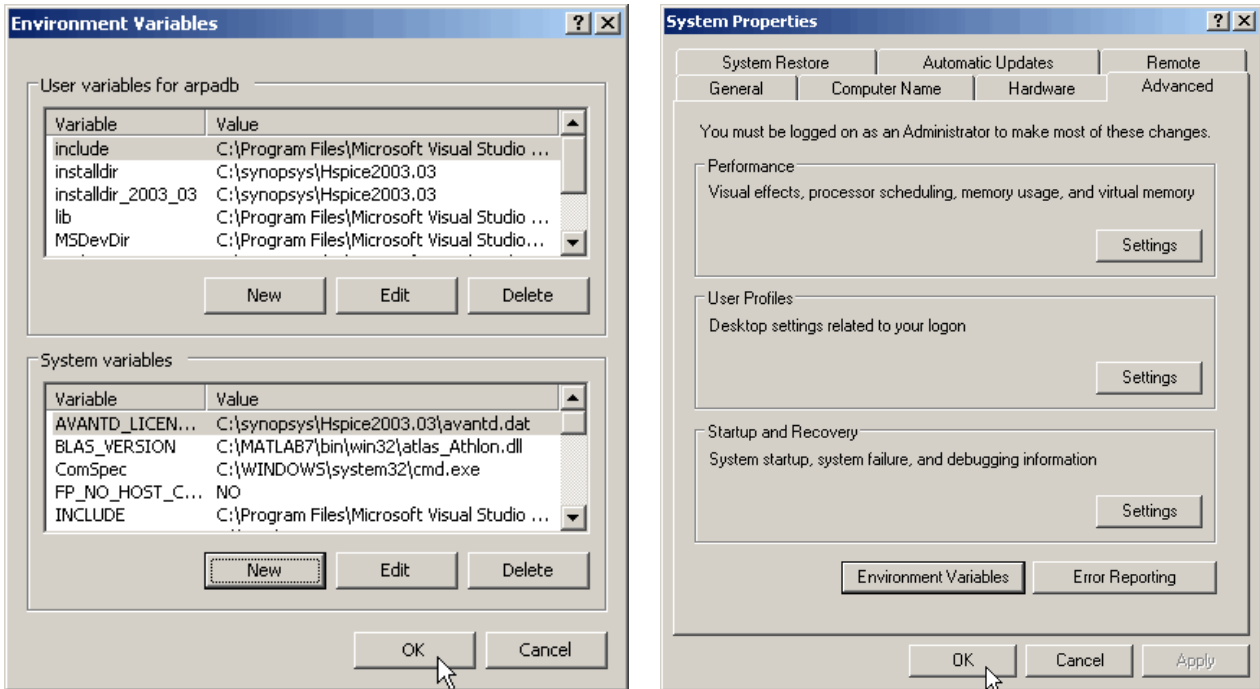
Click on the Environment Variables button.



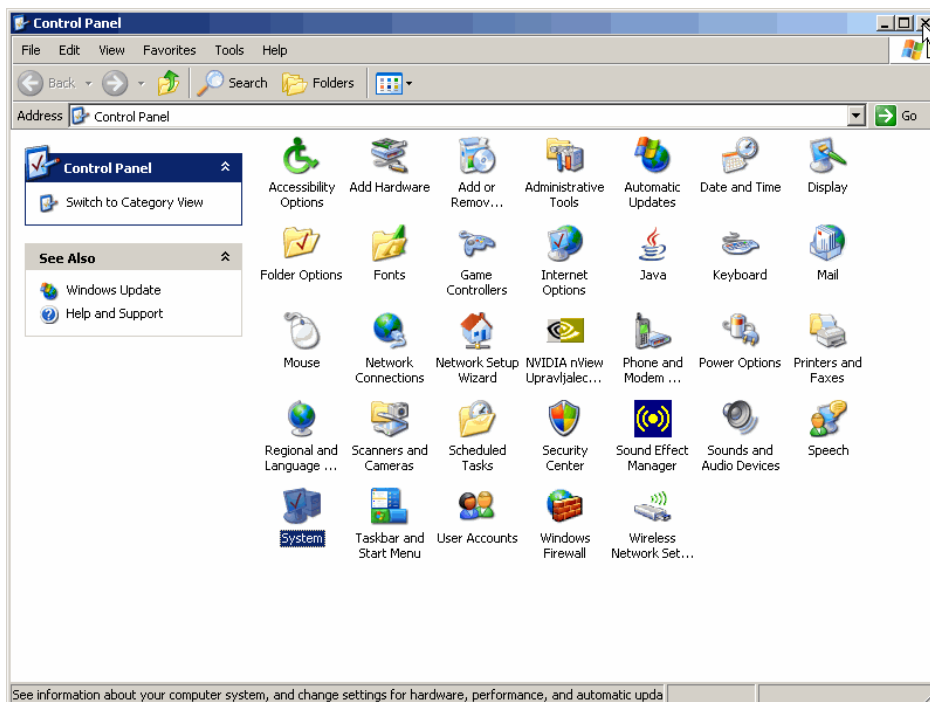
Add a new system variable by clicking on the lower New button.



Name the variable OPUSHOME. Set it to the directory, where you installed SpiceOpus. Click on OK.



Confirm your changes by clicking on OK in the Environment variables dialog and once more in the System Properties dialog.



Close the Control Panel.

Linux

Installing the software

Become root.

```
su -
```

Unpack the .tar.gz archive. A directory will be created with the name that looks like

```
spice_opusXXX_linux_DATE_TIME
```

Enter this directory.

```
cd spice_opusXXX_linux_DATE_TIME
```

Start the installation script (`spice.install`).

```
./spice_install INSTALL_PREFIX
```

INSTALL_PREFIX is the tree where Spice Opus will be installed. The recommended location is `/usr/local`. The installation script removes any previous Spice Opus installation in that tree and replaces it with the latest version. The binaries go to `INSTALL_PREFIX/bin`.

After the installation is finished, you can remove the `spice_opusXXX_linux_DATE_TIME` directory that was created by unpacking the .tar.gz archive.

Setting up the environment

We shall assume that you are using BASH. Add the following two lines to `/etc/profile` (you must be root in order to be able to do it).

```
OPUSHOME=INSTALL_PREFIX  
export OPUSHOME
```

where `INSTALL_PREFIX` is the tree where you installed Spice Opus.

It is also convenient if you add `INSTALL_PREFIX/bin` to your path. Add the following two lines at the end of `/etc/profile`.

```
PATH=$PATH:$OPUSHOME/bin  
export PATH
```

Log out and log in again for the changes to take effect.